

January 18, 2007

RE: Instructions on email setting changes for WebOS clients

To: All New Motion Designs Hosting Clients on the WebOS Platform

Effective: February 1, 2007

If your web site was previously hosted on the NMD WebOS operating server and has now migrated over to the NMD Plesk control panel system you will have to make a few changes in your email settings. Modification of the email settings is necessary for continued operation of your email accounts.

Please follow this tutorial on how to modify your email settings.

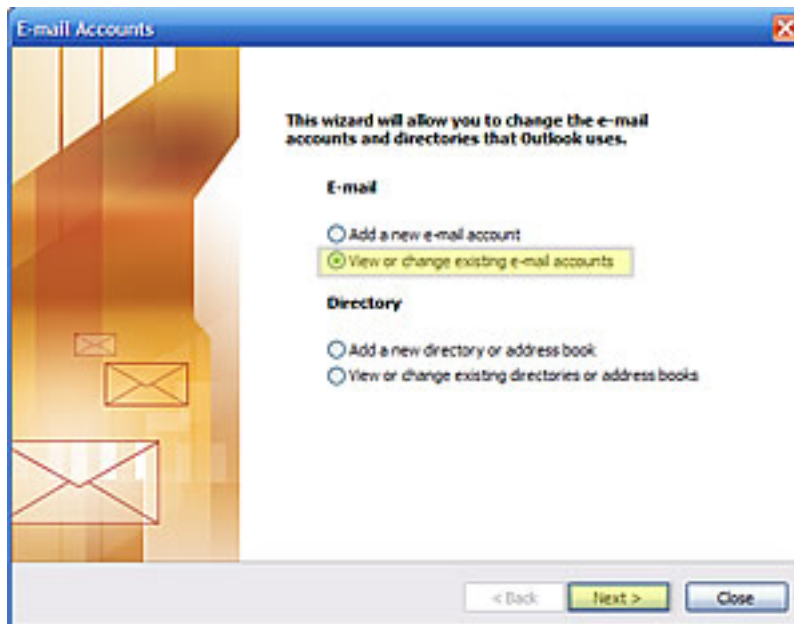
How to identify your previous server?.....	2
For Outlook:	2
For Outlook Express:	4
How to Change Existing Settings.....	6

How to identify your previous server?

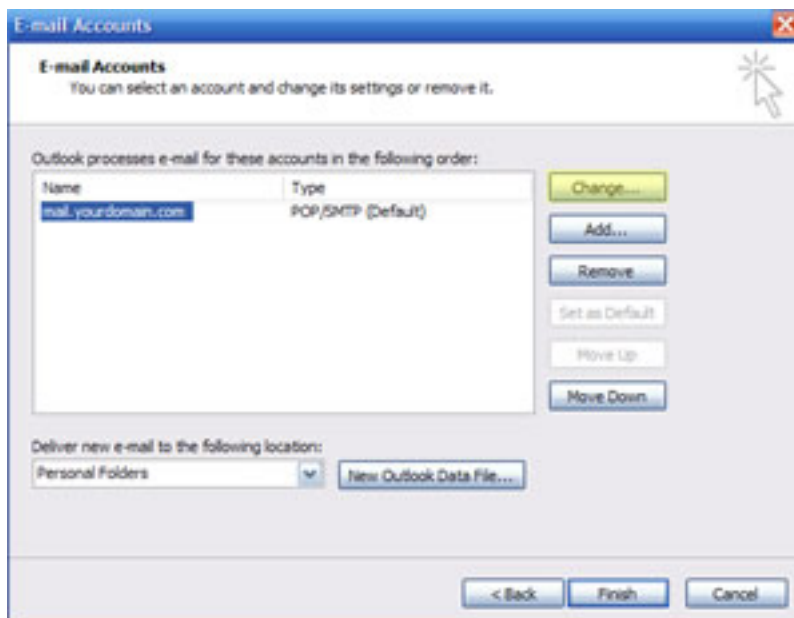
To identify if your domain was previously hosted on the WebOS platform check you current email account settings. To do this open Outlook or Outlook Express, which ever email client you are using and follow these directions:

For Outlook:

1. Click "Tools" in the menu bar at the top of Outlook
2. Click "E-mail Accounts"
3. On the box that appears check the "View or change e-mail accounts" and the click "Next >"



4. On the next screen choose the email account for your domain and click "Change..."



5. In the next screen check your username. If it has a "." (period) after the prefix and before the domain name then your domain and email is using the WebOS platform.

E-mail Accounts

Internet E-mail Settings (POP3)
Each of these settings are required to get your e-mail account working.

User Information

Your Name:

E-mail Address:

Server Information

Incoming mail server (POP3):

Outgoing mail server (SMTP):

Logon Information

User Name:

Password:

Remember password

Log on using Secure Password Authentication (SPA)

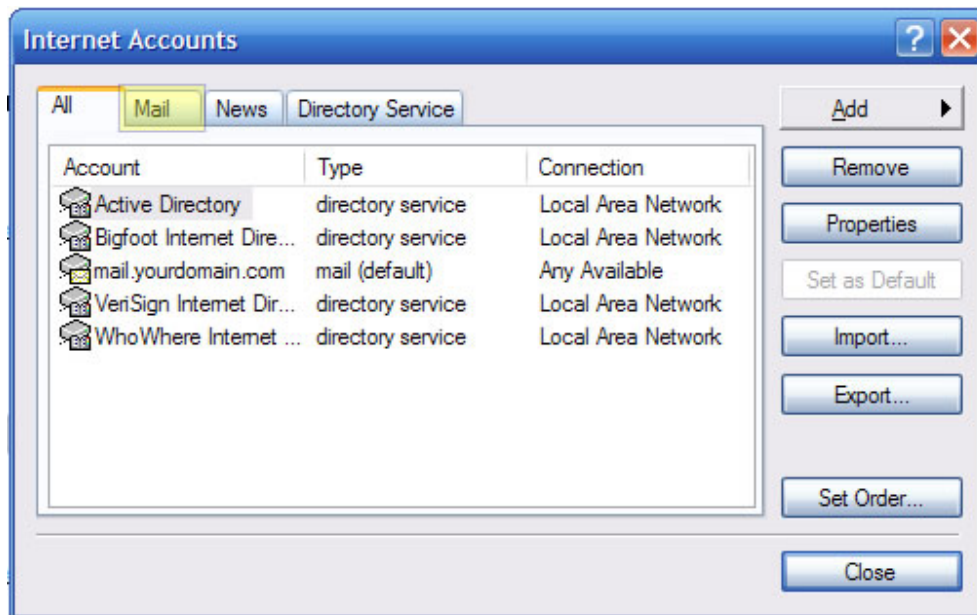
Test Settings

After filling out the information on this screen, we recommend you test your account by clicking the button below. (Requires network connection)

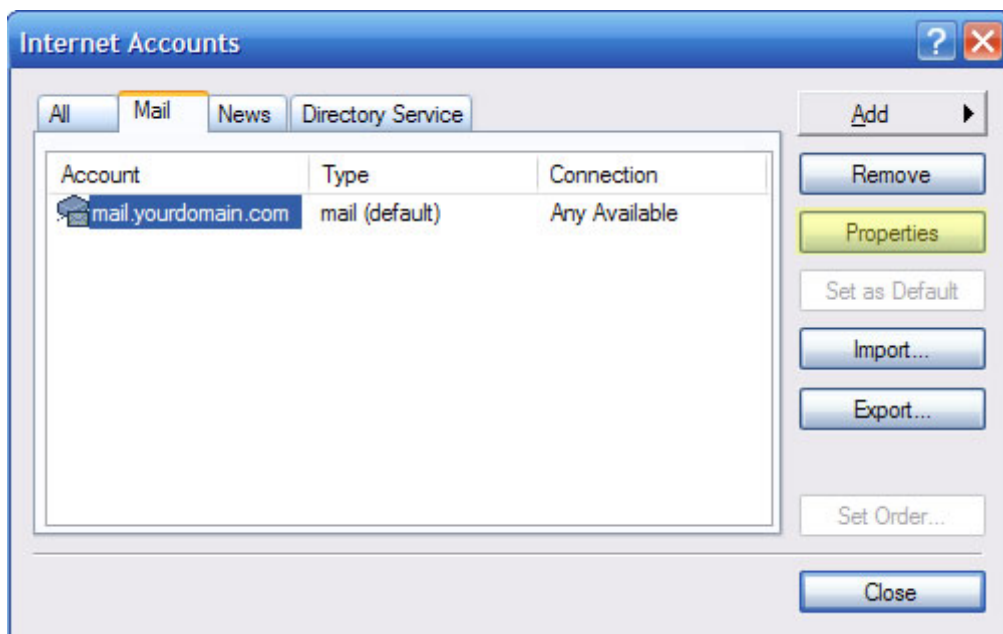
6. To change the email settings to work with the new Plesk server go to the "How to Change Existing Settings" section of this document

For Outlook Express:

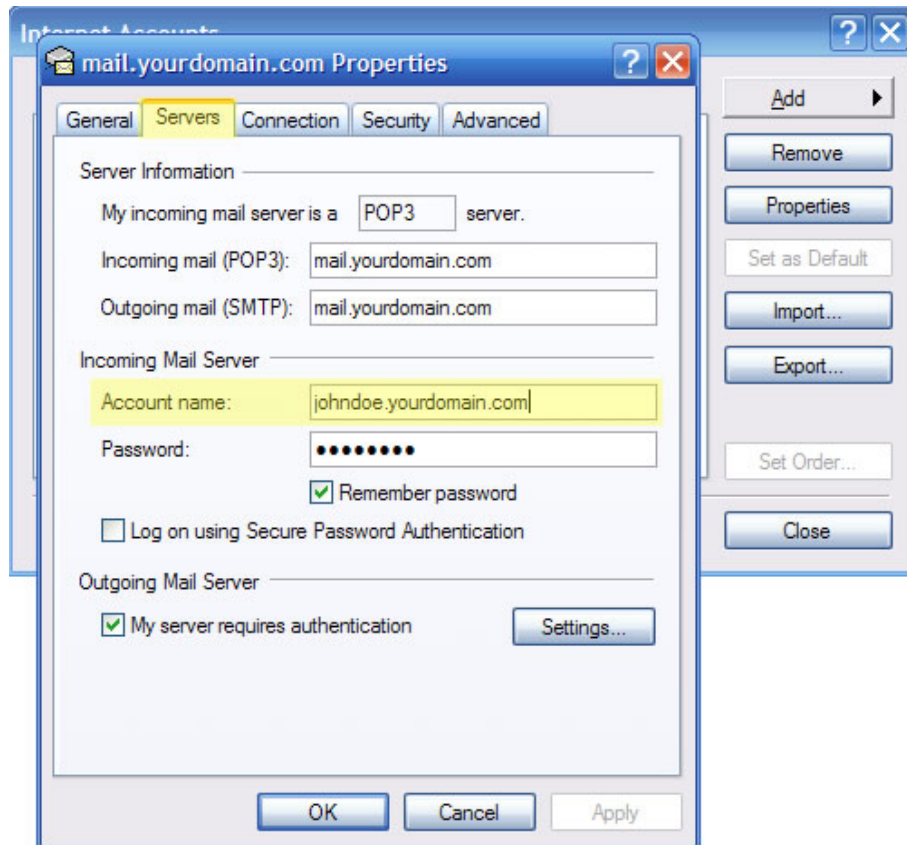
1. Click "Tools" in the menu at the top of Outlook Express
2. Click "Accounts"
3. In the box that opens click on the "Mail" tab



4. Under the "Mail" tab click the email account for your domain, then click the "Properties" button



5. In the next screen click the "Server" tab and check your "Account Name". If it has a "." (period) after the prefix and before the domain name then your domain and email is using the WebOS platform.



6. To change the email settings to work with the new Plesk server go to the "How to Change Existing Settings" section of this document

How to Change Existing Settings

1. Follow the instructions above for either [Outlook](#) or [Outlook Express](#) to check your settings
2. When you get to the "User Name" or "Account Name" (depending on Outlook version) simply change the "." (period) to an "@" sign.
3. If your email password has also changed during migration, you can change that also at this time by entering the new password in the "Password" field.